



The Eurolook transparent aluminium shutter is used for high security commercial sites where transparency is essential, such as shops, banks and museums. The shutter offers a maximum surface area of up to 50m² when mounted externally and 72m² when mounted internally. A choice of tubular and outboard motor types accommodate all sizes of shutter.



APPLICATIONS

Medium security commercial sites where see-through vision is a priority. Tested by SKG to ENV 1627-16390 standard with Class 3 security rating. Fire tested to BS 476:Part 7 (1997), Class 1 rating.

CURTAIN LINKS

Synthetic links of polycarbonate built in a brick formation as standard, enabling 83% transparency and 92% daylight transmission. UV-stabilised, it does not discolour or yellow. Eurolook Standard bends while effectively resisting breaking.

Finish: Transparent polycarbonate. Also available in frosted and ventilated variants.

Visible Face:	85mm
Profile Height:	108mm
Weight per m ² :	9kg
Maximum Width:	12000mm (outboard motor) 7000mm (tubular motor)
Maximum Area:	29m ² (tubular motor) 72m ² (outboard motor, internal fit) 50m ² (outboard motor, external fit)

CASING

Not provided as standard. Galvanised steel casing available (surcharge applies), with option to powder coat any RAL / BS colour.

Guide Height (mm)	Plate Size (mm)	Motor
2750	305	Tubular
4000	355	Tubular
4500	400	Tubular
5000	400	Outboard
6000	450	Outboard
7000	550	Outboard

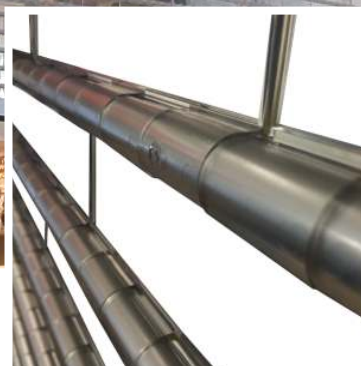


Plate sizes shown as a guide only and may vary.

BOTTOM SLAT

Extruded aluminium bottom slat with EPDM weather seal.

Finish: Anodised aluminium as standard, powder coating available on request.

GUIDE CHANNELS

Extruded aluminium with a PVC weather seal. Guide channel width of 80mm or 115mm. Guide channels are either bolted onto angle or box section, or fixed directly to the opening, depending on the application.

Finish: Mill aluminium finish as standard, powder coating available on request.

OPERATION

Electric, Tubular Motor: NRG Economy tubular motor with internal rocker or external key switch as standard & safety brake as appropriate to comply with legislation. Manual override and crank handle as required (surcharge applies).

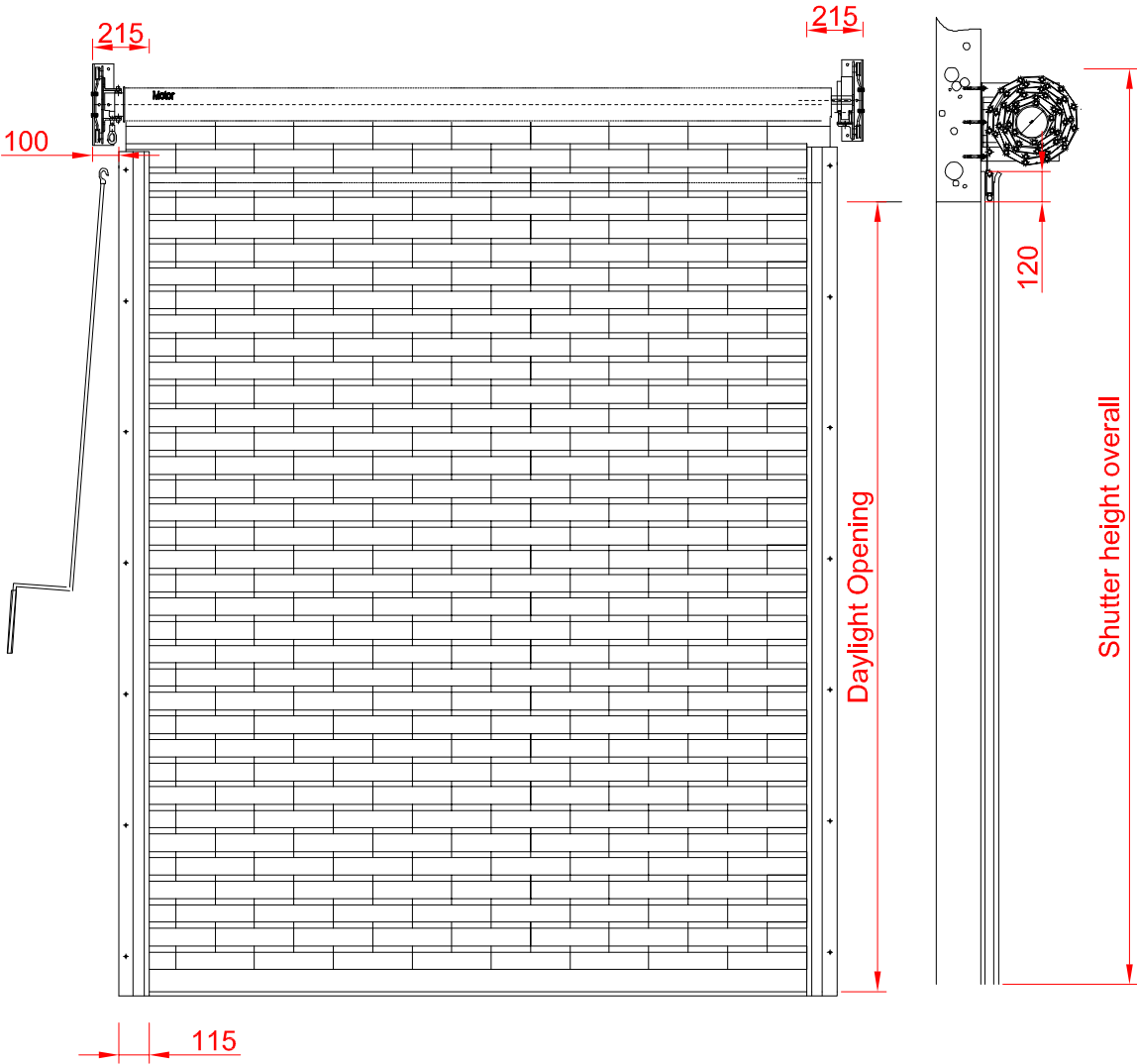
Electric, Outboard Motor: GfA Safedrive & Ranger three phase motors with safety brake, chain manual override and TS959 push button control station as standard.

Both tubular and outboard motors have numerous control option variants such as remote, group or mobile phone activation.

CE Compliant to all applicable directives and regulations.

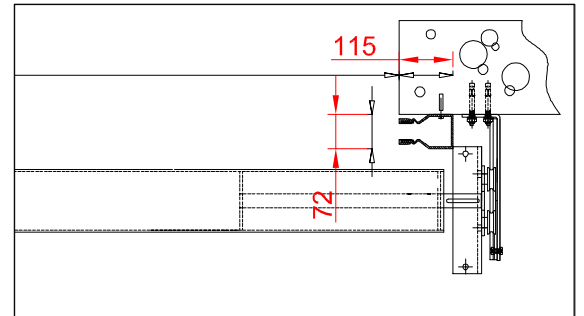


FRONT FACE

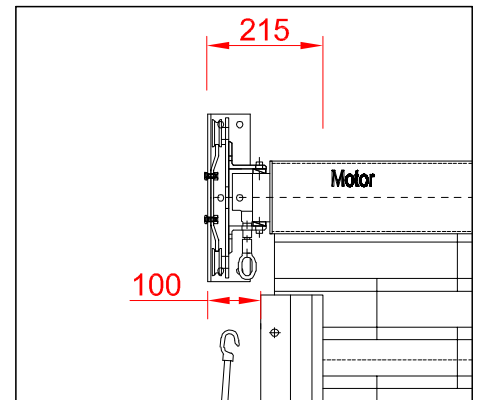


FIXING DETAIL

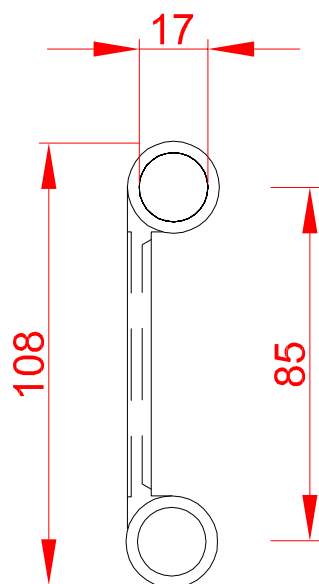
FACE FIX



REVEAL FIX



SLAT PROFILE



GUIDE CHANNELS

