

# E130 Elite E10 (SR5)

## LPCB Rated Security Shutter



The “Secured By Design” E130 Elite security shutter has been tested and approved by the LPCB (Loss Prevention Certification Board) to an insurance approved E10 (SR5) security level (LPS 1175: Issue 8). The E130 Elite is also approved by the NPSA (National Protective Security Authority), for use in buildings of importance to national infrastructure, such as government buildings, prisons etc.



### APPLICATIONS

Utilising an innovative aluminium design, The E130 Elite E10 (SR5) security shutter provides a high security solution for commercial and industrial applications up to 10m wide and 90m². The 130mm profile face consists of two interlinking sections. A 105mm double skinned extruded aluminium profile is married with a 25mm self locking anti-lift quirk.

The E130 Elite E10 (SR5) is typically electrically operated via a hard wired switch or remote control with appropriate safety features.  
Suitable for internal face fit.

### CURTAIN SLAT

Double-skinned extruded aluminium slat with unique anti-cut inserts and an anti-lift profile (no additional locking systems required).

Slat Face:	105mm + 25mm anti-lift profile
Weight per m²:	32kg
Maximum Width:	10000mm
Maximum Area:	90m²

### ENCLOSURE

Not provided as standard. Steel casing available on request.

Guide Height (mm)	Plate Size (mm)	
3000	400	tubular
4800	450	outboard
6200	500	outboard
7800	550	outboard
9800	600	outboard

Plate sizes shown as a guide only and may vary.

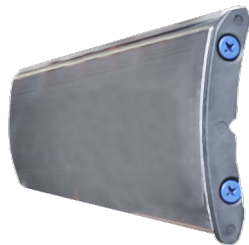
### Secured by Design



Official Police Security Initiative



National Protective Security Authority



### BOTTOM SLAT

Extruded aluminium bottom slat with solid aluminium defenders.

### GUIDE CHANNELS

Extruded aluminium guide channels with rubber weather seal. Width of 120mm.

### FINISH

The E130 can be powder coated to any RAL / BS colour reference

### OPERATION

Tubular Motor: With internal rocker switch or external key switch and safety brake as appropriate to comply with legislation. Manual override facility & crank handle as required (surcharge applies).

Outboard Motor: GfA single or three phase motor with integrated safety brake, chain manual override and push button control station as standard.

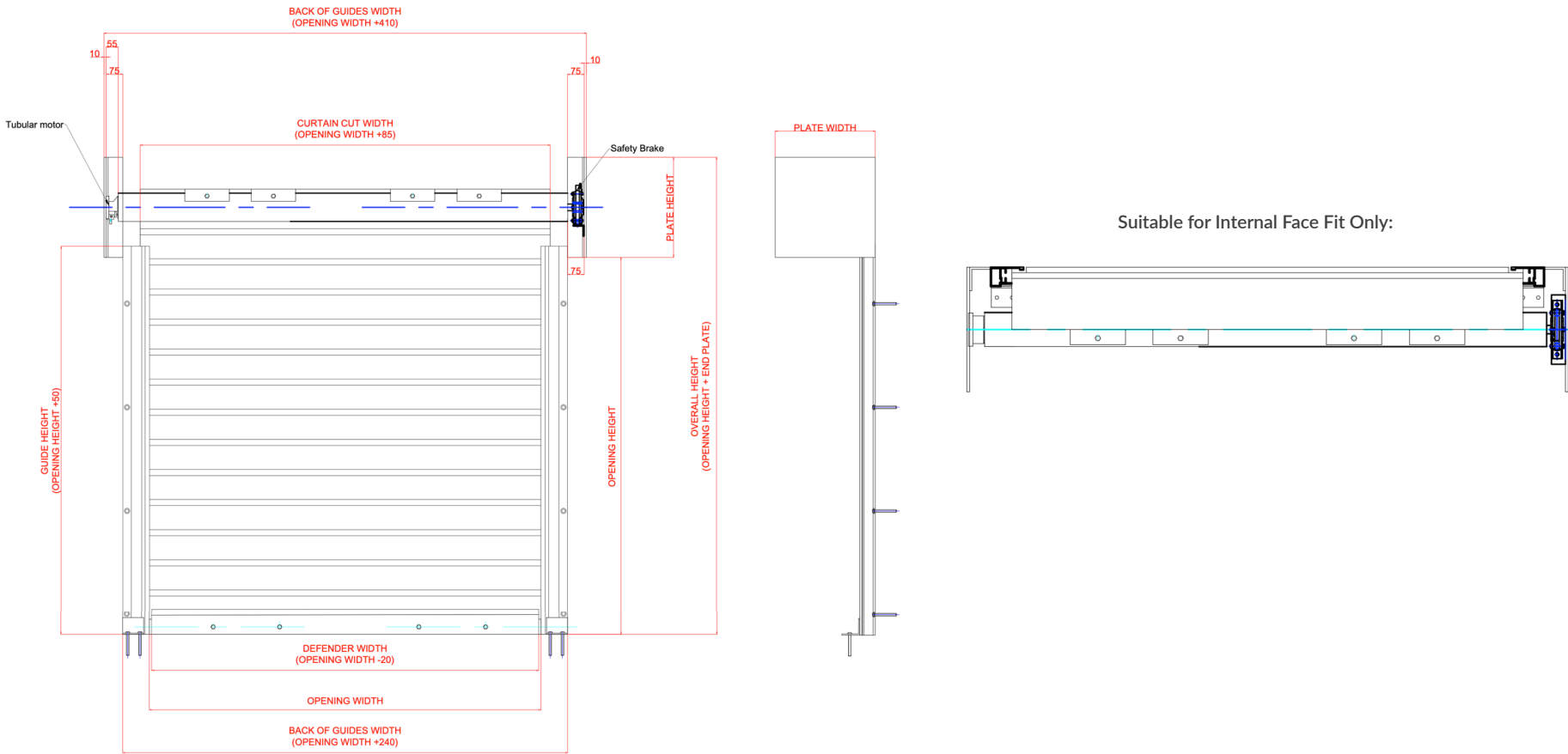
All motors have numerous control option variants such as remote and group or mobile phone activation.

# E130 Elite E10 (SR5)

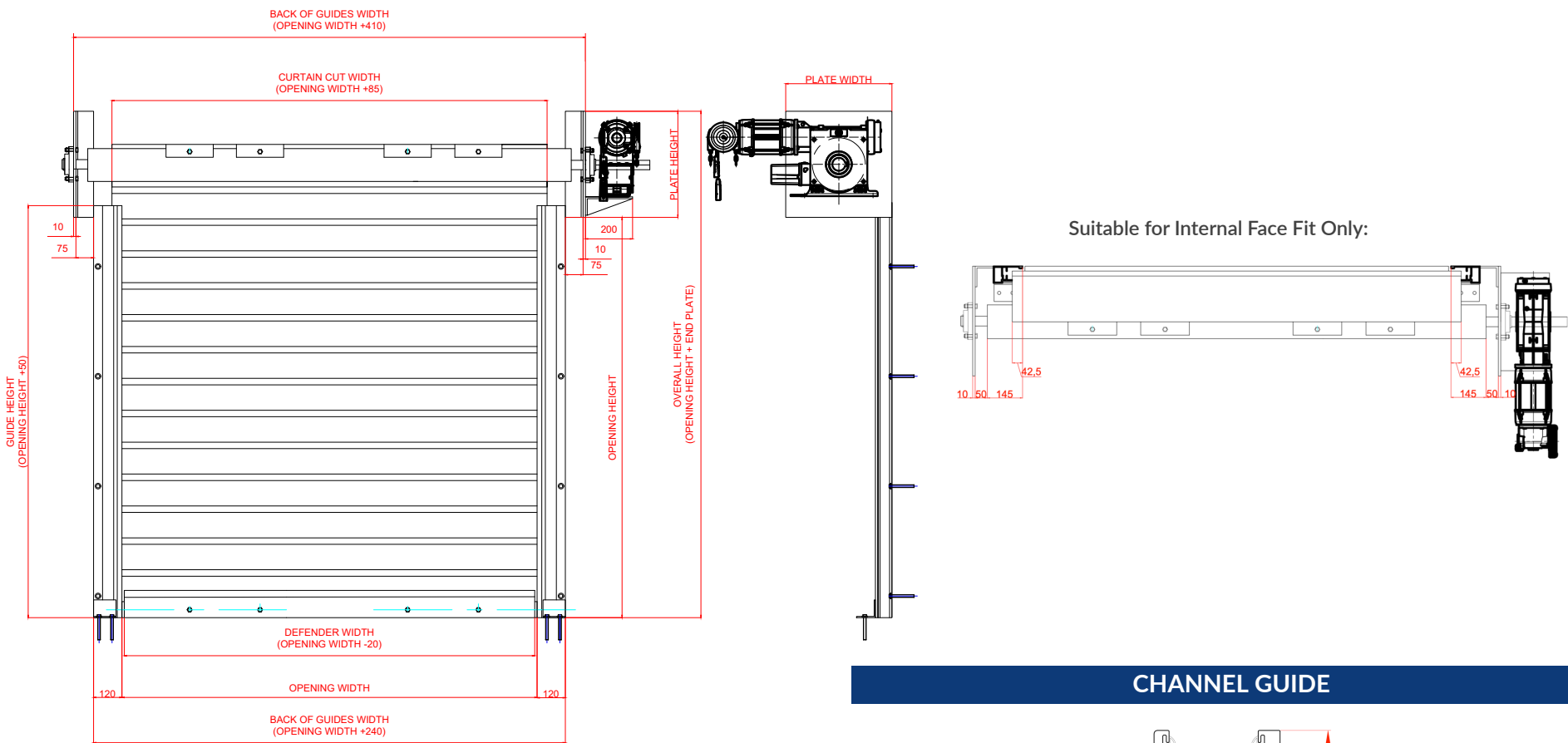
LPCB Rated Security Shutter



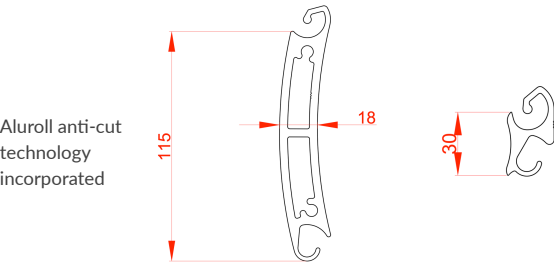
## TUBULAR MOTOR



## OUTBOARD MOTOR



## SLAT PROFILE & QUIRK



## CHANNEL GUIDE

